

F5



PRODUCT

The traditional F5 cylinder with freely duplicating keys is an entry-level vertical key system. The F5 is available in key different, key alike versions and for Masterkey systems.

APPLICATION

F5 is suitable for securing the secondary entrances of your home or of a commercial facility.

VERSION

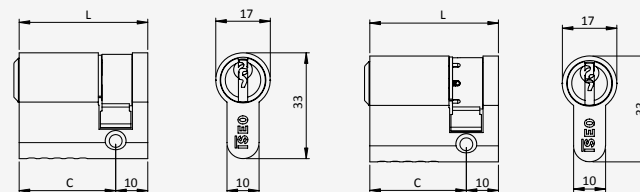
Available in compact as:

- single profile cylinder
- double profile cylinder
- pre-arranged for knob
- knob cylinder
- rim cylinder
- round cylinder

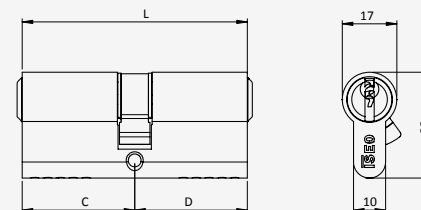
TECHNICAL PRODUCT FEATURES

- Cylinder body and plug made of brass in the standard version matt nickel-plated
- Suitable for installation in fire doors
- Encryption pins in brass
- Counterpins in brass
- Springs in stainless steel
- Euro-profile cylinder (norm)
- Locking cam made of sintered steel
- Locking cam in min. 30° position (according to DIN)
- In each plug are 2 picking-resistant counterpins

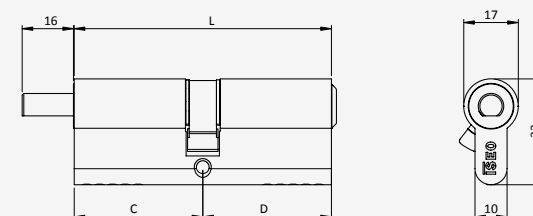
SINGLE PROFILE CYLINDER



EUROPEAN DOUBLE PROFILE CYLINDER



PRE-ARRANGED FOR KNOB



F5

FEATURES

F5 has 5 encryption pins from a length of 30-30 made of wear-resistant special brass, per locking side.

A anti-pick protection is integrated in the profile cylinder.

The surface of the cylinder body is matt nickel-plated or brass as standard.

Three overlapping profile ribs of the plug increase the the security of the profile cylinder against unauthorised openings (paracentric key profile). The keys are made of nickel coated brass.

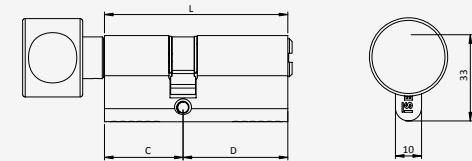
Optionally selectable features:

- Emergency and danger function

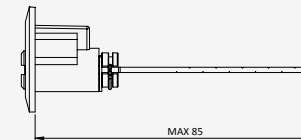
STANDARDS

Compact version:
Declaration of conformity
EN 1303: 2015-08
(116101B101C1410)

EUROPEAN DOUBLE PROFILE CYLINDER. ROUND KNOB



EXTERNAL RIM CYLINDER



ROUND CYLINDER

